

20-20 Design Version 9.1

Installation Guide

Version 1.0



20-20 Design Version 9.1 Installation

This guide is designed to assist you with the installation of 20-20 Design Version 9.1. We recommend that the computer meets the minimum specifications for operating the program; this can be found printed on the back of the DVD/CD case. The process for installation requires that you have the following two discs:

DVD 1 labelled: 20-20 Design 9 Aug 2011 – V9.1 – International
(Program Installation)



CD 2 labelled: IT Bureau, The Laminex Group
(NZ 20-20 Enhancement Tools)



It is required that the user profile on the computer is a **local administrator**. For Windows 7 and Vista users we advise to disable the user accounts control (UAC) to allow for easy installation. If you are uncertain of any of the above, please see your computer support person.

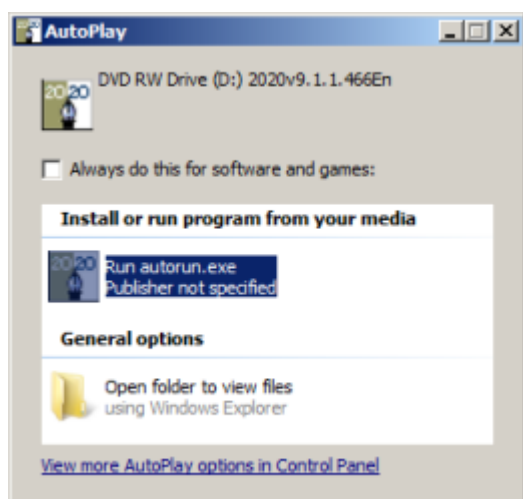
Installing over a previous version and compatibility

If your computer has 20-20 Design previously installed, you can overwrite this installation (*Step 8, Page 5*). This will discontinue use of the previous version and past designs will then need to be accessed solely in Version 9.1. Designs opened or created in Version 9.1 will NOT be accessible and compatible in older versions (i.e. 8).

20-20 Design Version 9.1 DVD1 Installation Guide

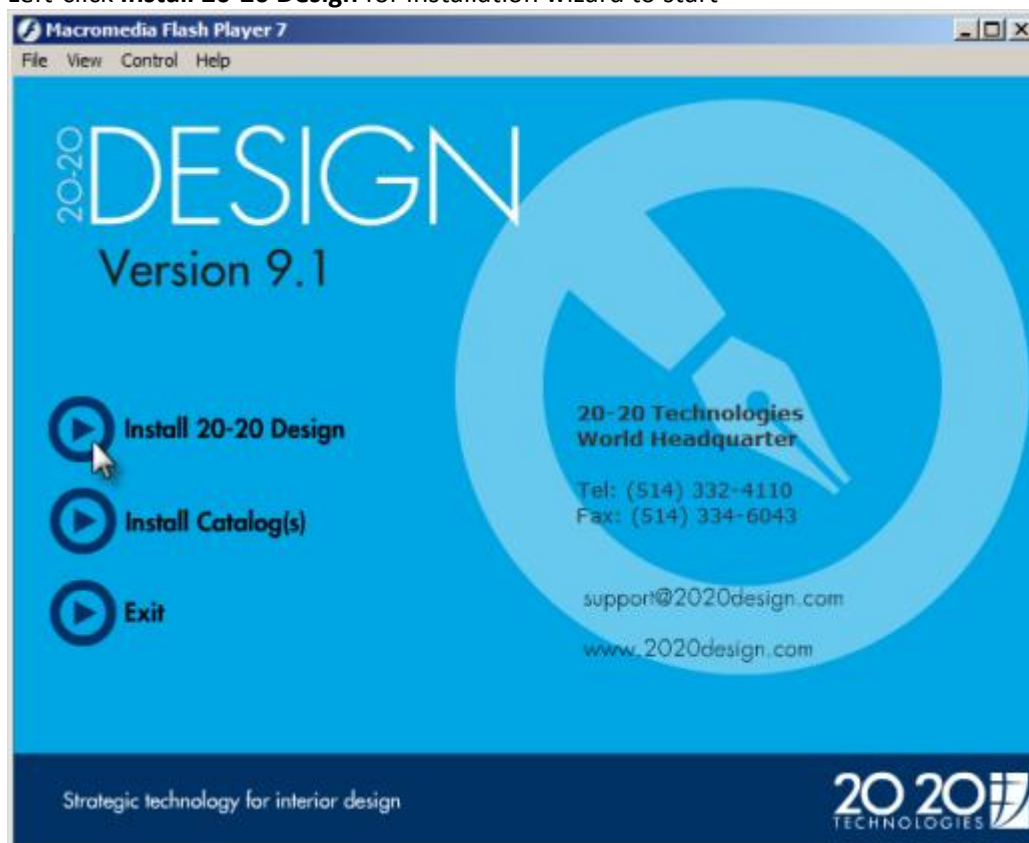
DVD1 is solely the 20-20 Design Version 9.1 International install. This will include all default textures, catalogs and files required to run the program.

Insert *DVD 1 labelled: 20-20 Design 9 Aug 2011 – V9.1 – International* in the corresponding drive, wait a few minutes and the autorun should start the installation and take you to the Installation Welcome screen.



If the autorun was disabled on your computer, In the Windows menu bar, click Start, and then Run. In the Run dialog, type the letter corresponding to your CD/DVD drive followed by \autorun.exe and click OK.

1. Left-click **Install 20-20 Design** for installation wizard to start



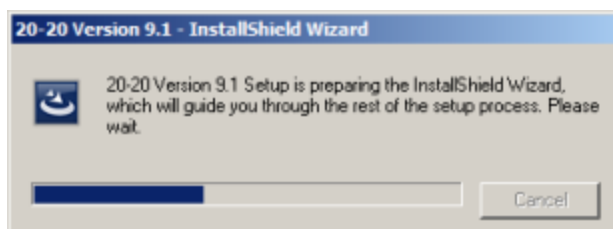
All or some of the following software requirements will be installed on your computer:

| Status | Requirement |
|---------|-------------------------------------|
| Pending | AcrobatReader9 |
| Pending | Sentinel Protection Installer 7.5.0 |
| Pending | vcredist_x86_9 |
| Pending | SSCERuntime-ENU-x86 |
| Pending | MicrosoftWSE30Runtime |

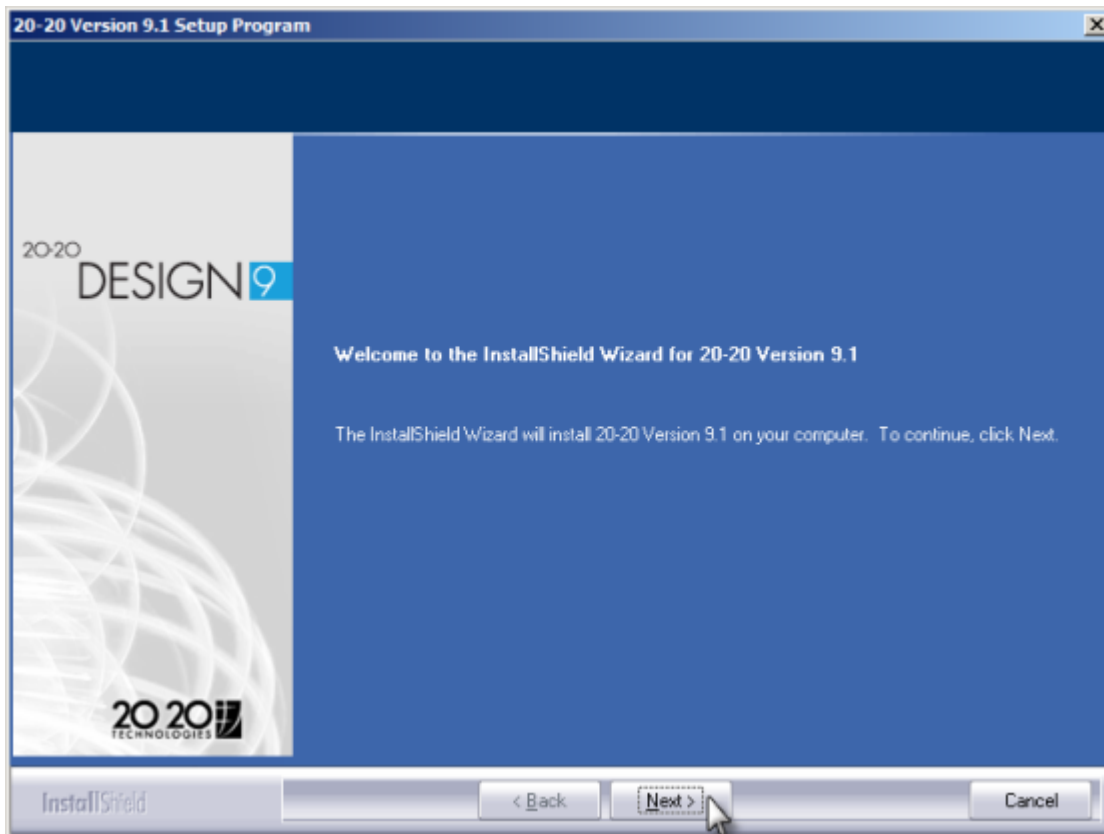
20-20 Design Version 9.1 requires those listed to be installed on your computer. Some or all of the above will not show if requirements have previously been installed.

2. Left-click **Install** and allow for requirements to be installed. Time for installation can vary depending on your computer specifications and quantity of requirements being installed.

On completion of requirements installed you will be prompted with the installation wizard

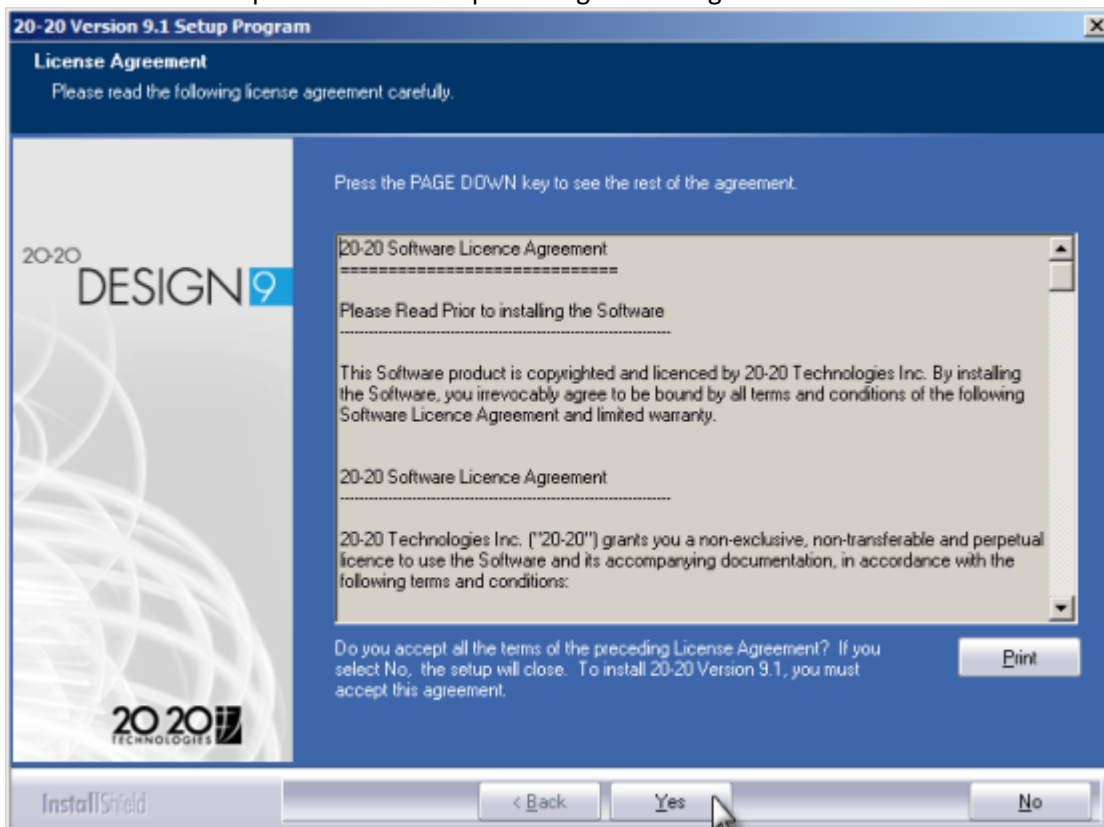


3. Left-click **Next**



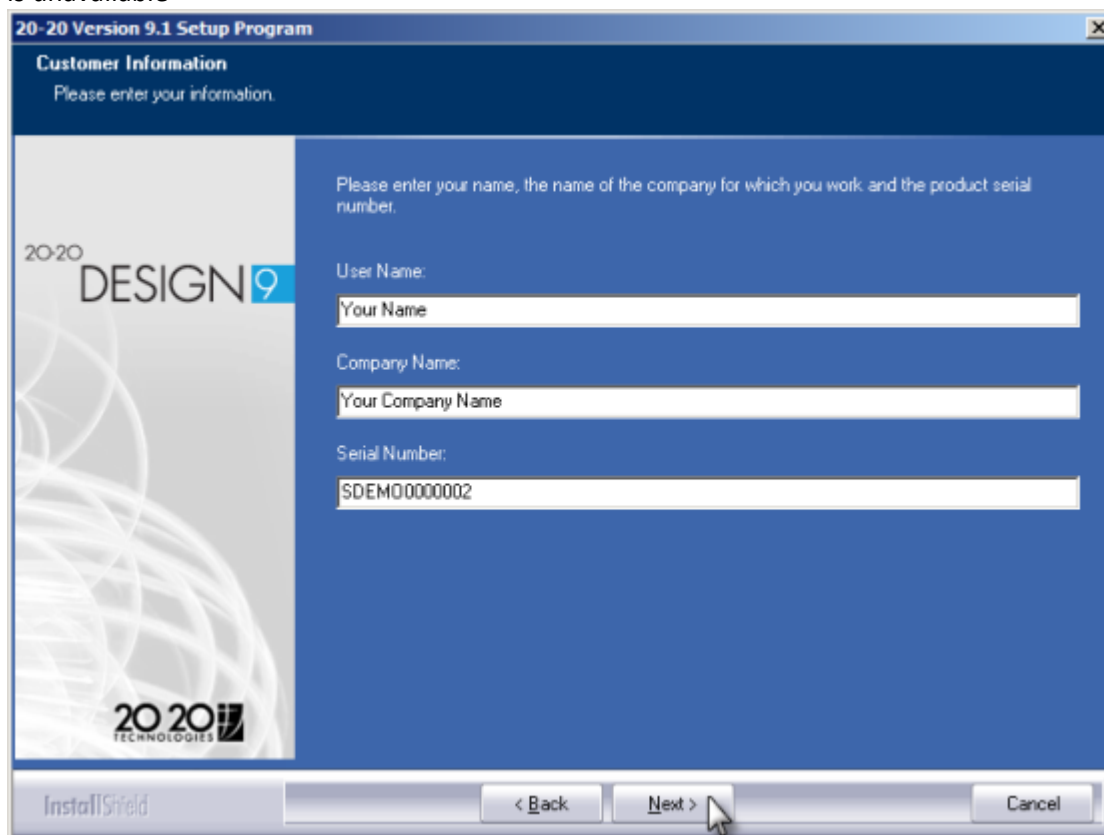
Read the License Agreement, use the vertical scroll or Page Down. You can print the License Agreement by left-clicking the Print button

4. Left-click **Yes** to accept all terms of the preceding License Agreement and continue



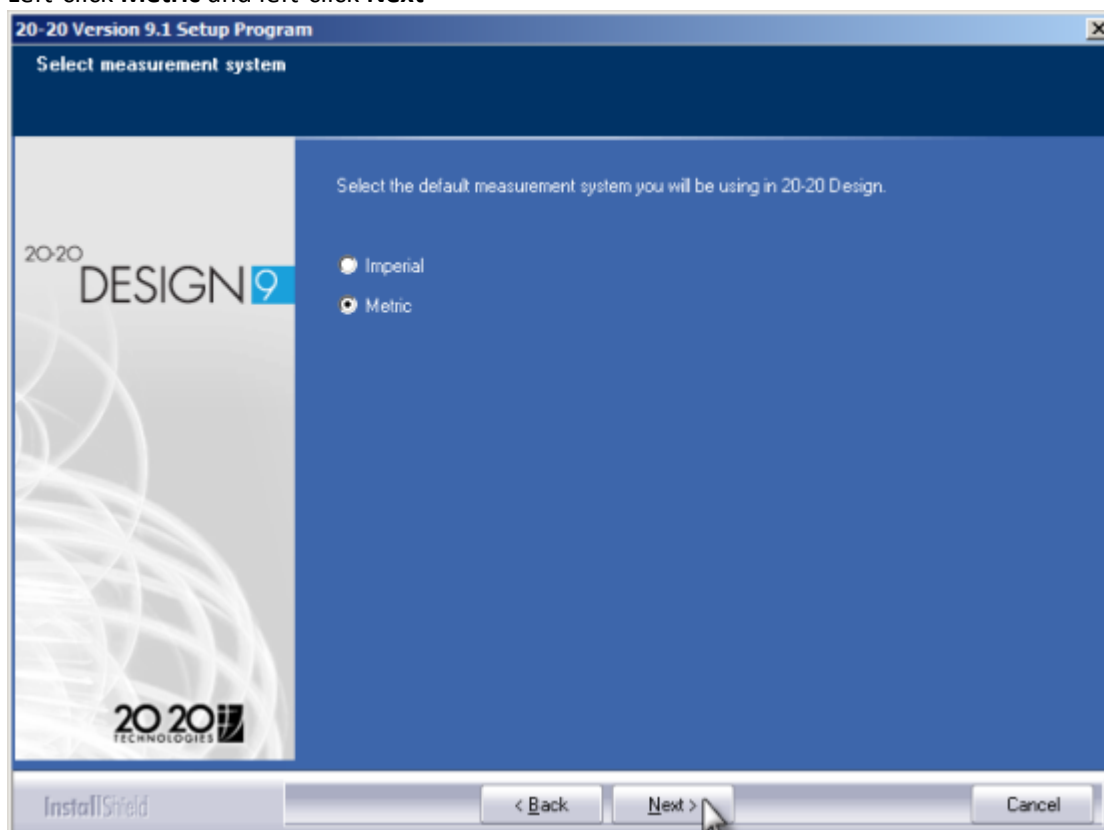
5. Type in **Your Name** and **Your Company Name** in the fields labelled

Type in your **Serial Number**, this found on your security key. You can leave SDEMO0000002 if a key number is unavailable



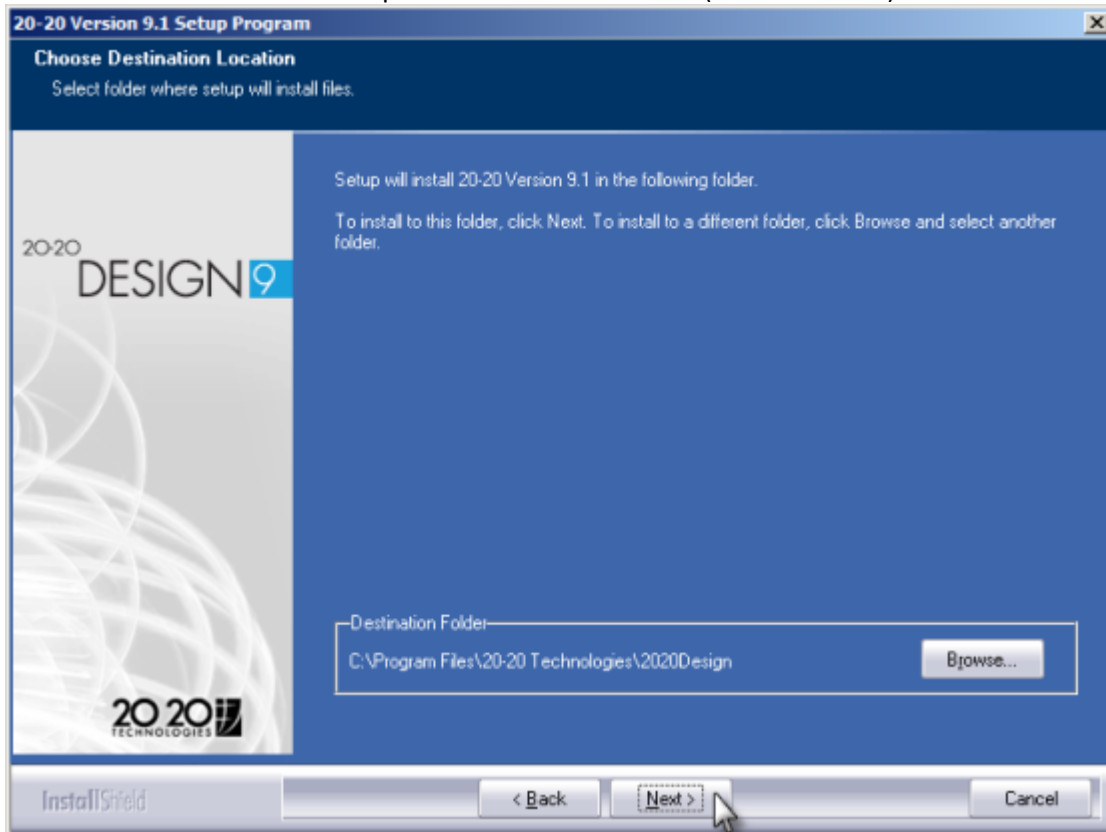
The screenshot shows the '20-20 Version 9.1 Setup Program' window. The title bar reads '20-20 Version 9.1 Setup Program'. The main window has a dark blue header with the text 'Customer Information' and 'Please enter your information.' Below this, on the left, is a logo for '20-20 DESIGN 9' and '20 20 TECHNOLOGIES'. The main area is a lighter blue and contains the text 'Please enter your name, the name of the company for which you work, and the product serial number.' There are three input fields: 'User Name:' with the placeholder text 'Your Name', 'Company Name:' with the placeholder text 'Your Company Name', and 'Serial Number:' with the placeholder text 'SDEMO0000002'. At the bottom, there is an 'InstallShield' logo and three buttons: '< Back', 'Next >', and 'Cancel'. A mouse cursor is pointing at the 'Next >' button.

6. Left-click **Metric** and left-click **Next**



The screenshot shows the '20-20 Version 9.1 Setup Program' window. The title bar reads '20-20 Version 9.1 Setup Program'. The main window has a dark blue header with the text 'Select measurement system'. Below this, on the left, is a logo for '20-20 DESIGN 9' and '20 20 TECHNOLOGIES'. The main area is a lighter blue and contains the text 'Select the default measurement system you will be using in 20-20 Design.' There are two radio button options: 'Imperial' and 'Metric'. The 'Metric' option is selected. At the bottom, there is an 'InstallShield' logo and three buttons: '< Back', 'Next >', and 'Cancel'. A mouse cursor is pointing at the 'Next >' button.

7. Left-click **Next** to install to the specified destination folder (recommended)

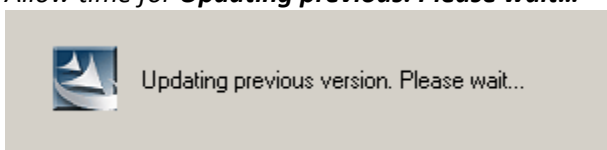


8. Left-click **Install** to begin the installation

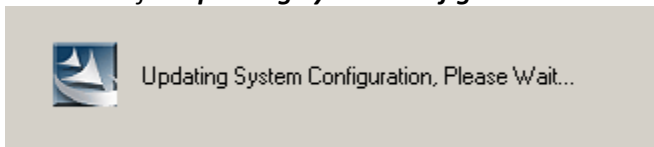
*Setup will also detect if a previous version of 20-20 Design is currently installed. Left-click **Install** to overwrite an existing version. This will not remove your designs or your manufacturer catalogs.*

20-20 Design Version 9.1 DVD1 will now be installed on your system. Installation time may vary depending on your requirements and computer specifications. You are not required for further steps of the process until completion.

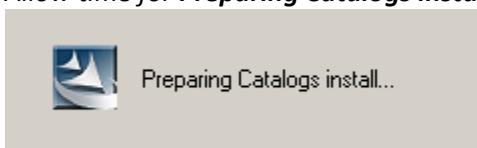
*Allow time for **Updating previous. Please wait...***



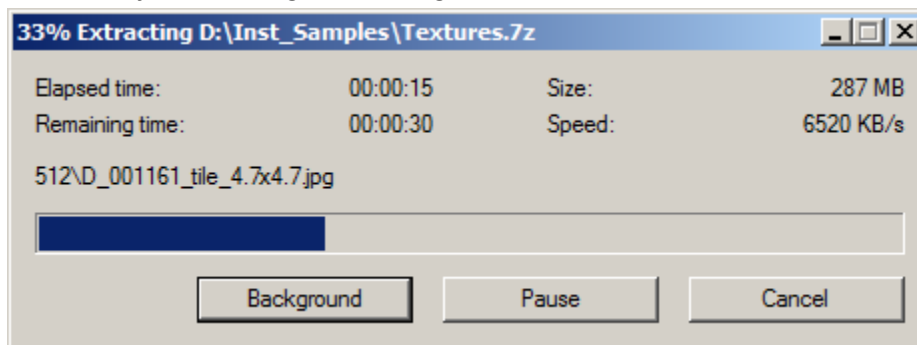
*Allow time for **Updating System Configuration. Please wait...***



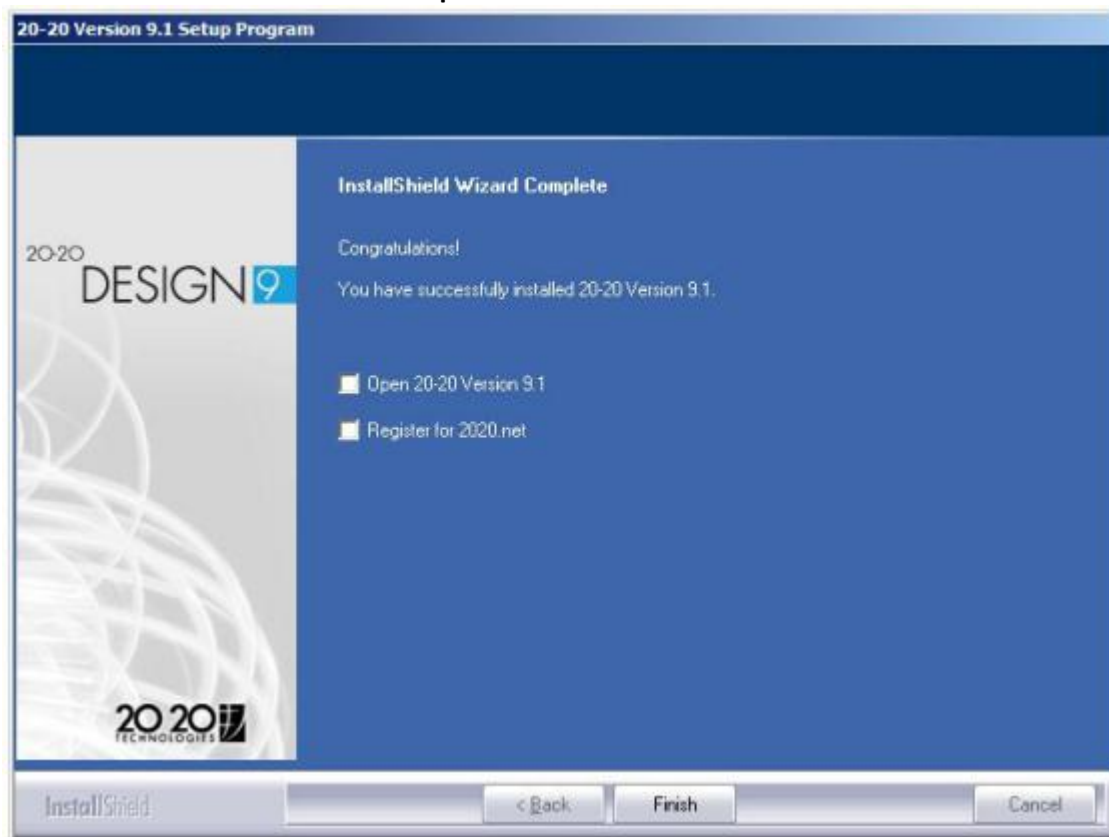
*Allow time for **Preparing Catalogs install...***



Allow time for extracting and catalogs installation



9. Left-click to **uncheck** the checkbox **Open 20-20 Version 9.1** and left-click **Finish**



Where the checkbox is NOT visible left-click **Finish**

Select a default catalog: 2020_PLU (Or your default if available)

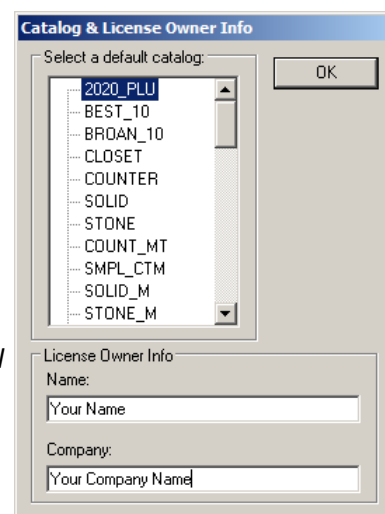
Add Your Name and Company Name in the appropriate fields

Left-click **OK** (*this will launch 20-20 Design*)

Exit or Close 20-20 Design

Eject DVD 1 labelled: 20-20 Design 9 Aug 2011 – V9.1 – International

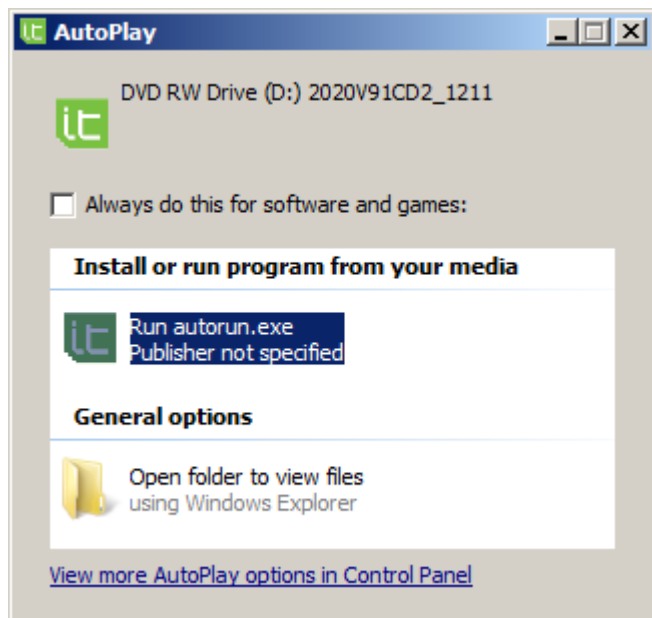
Please refer to **20-20 Design Version 9.1 CD 2 Installation Guide**



20-20 Design Version 9.1 CD 2 Installation Guide (NZ 20-20 Enhancement Tools)

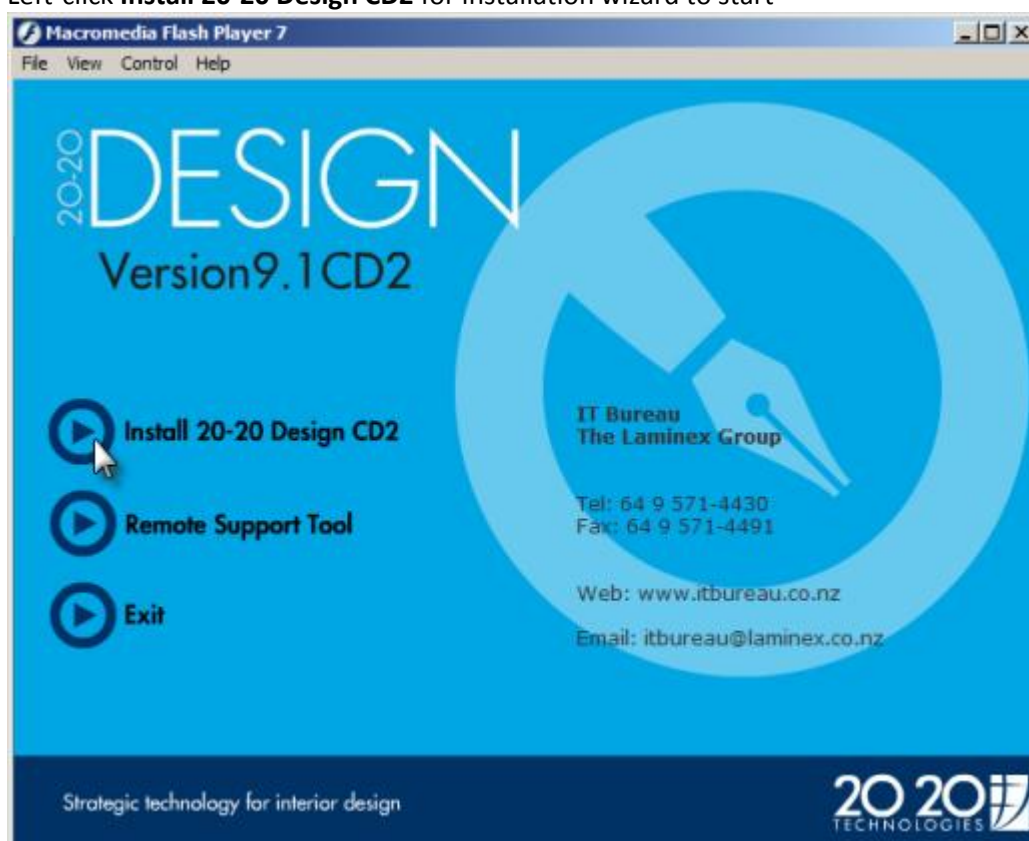
CD2 of the installation is viewed as an enhancement to your 20-20 Design Version 9.1 installation. This to ensure you have access to our catalog(s), textures, and files to customise 20-20 to our New Zealand standard.

Insert *CD 2 labelled: IT Bureau, The Laminex Group* in the corresponding drive, wait a few minutes and the autorun should start the installation and take you to the Installation Welcome screen.

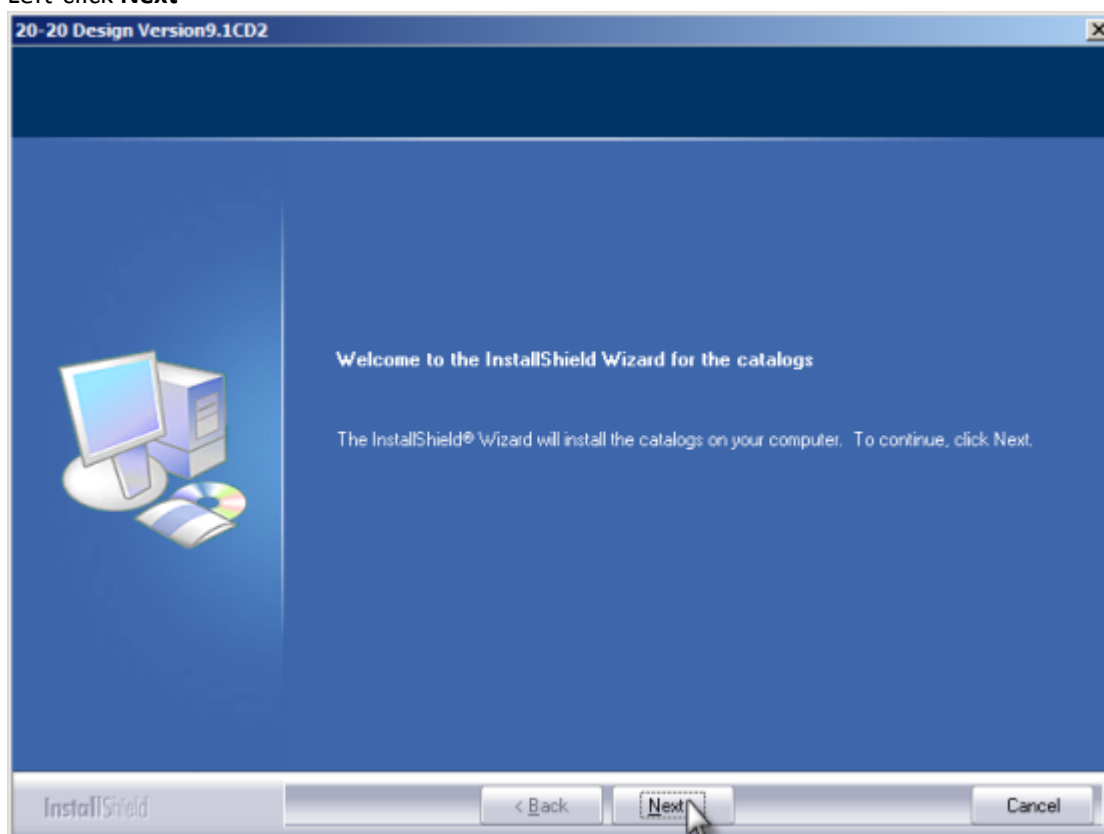


If the autorun was disabled on your computer, In the Windows menu bar, click Start, and then Run. In the Run dialog, type the letter corresponding to your CD/DVD drive followed by \autorun.exe and click OK.

1. Left-click **Install 20-20 Design CD2** for installation wizard to start

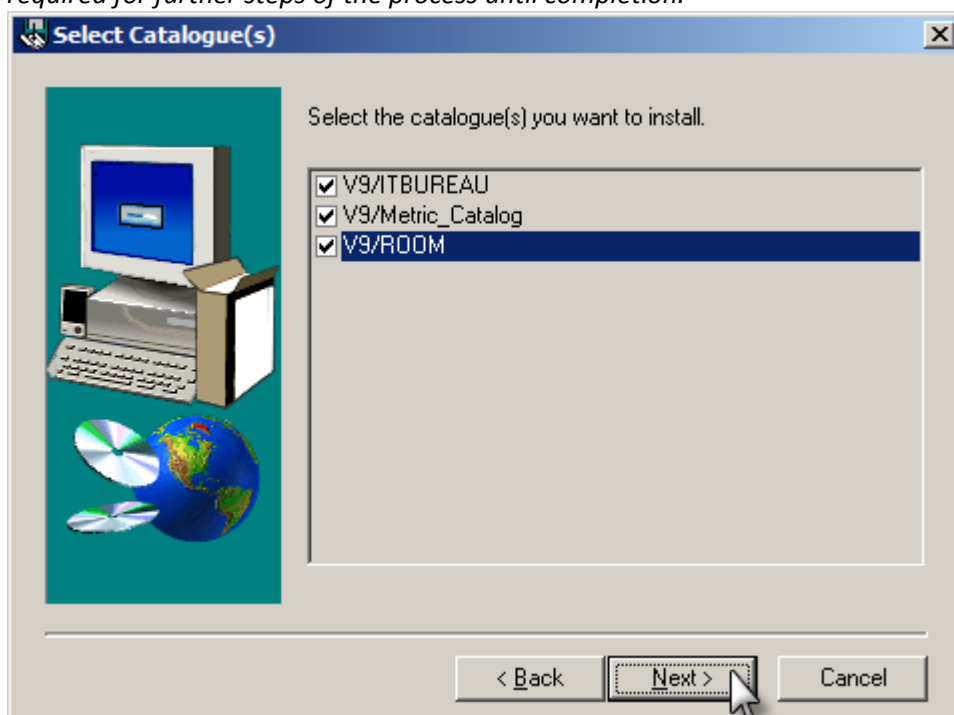


2. Left-click **Next**

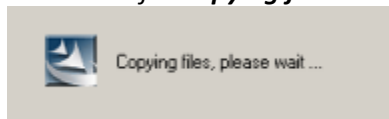


3. Left-click **Next** to install the selected catalogs

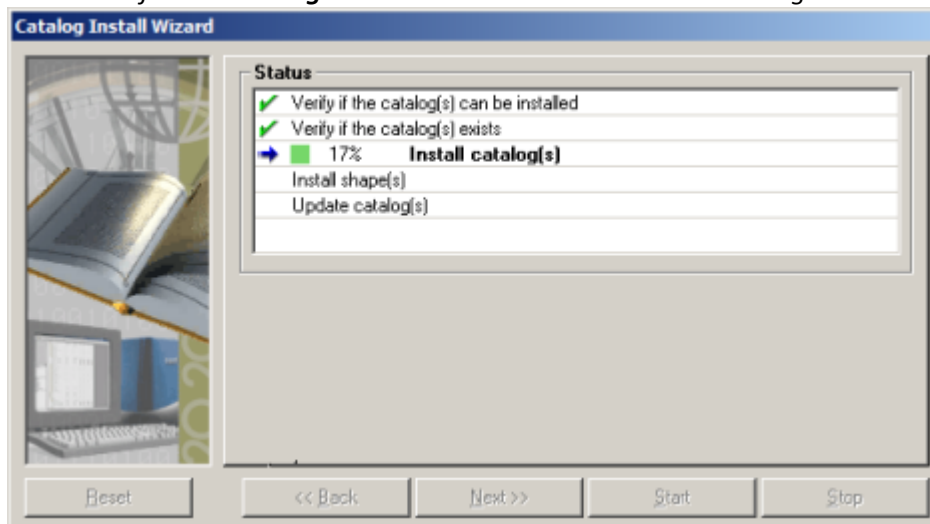
20-20 Design Version 9.1 CD2 (NZ 20-20 Enhancement Tools) will now be installed on your system. Installation time may vary depending on your requirements and computer specifications. You are not required for further steps of the process until completion.



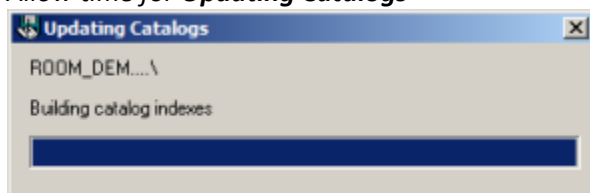
Allow time for **Copying files. Please wait...**



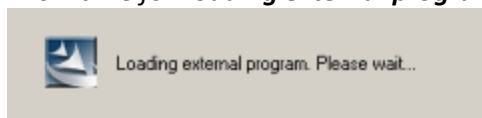
Allow time for the **Catalog Install Wizard** to install selected catalogs



Allow time for **Updating Catalogs**

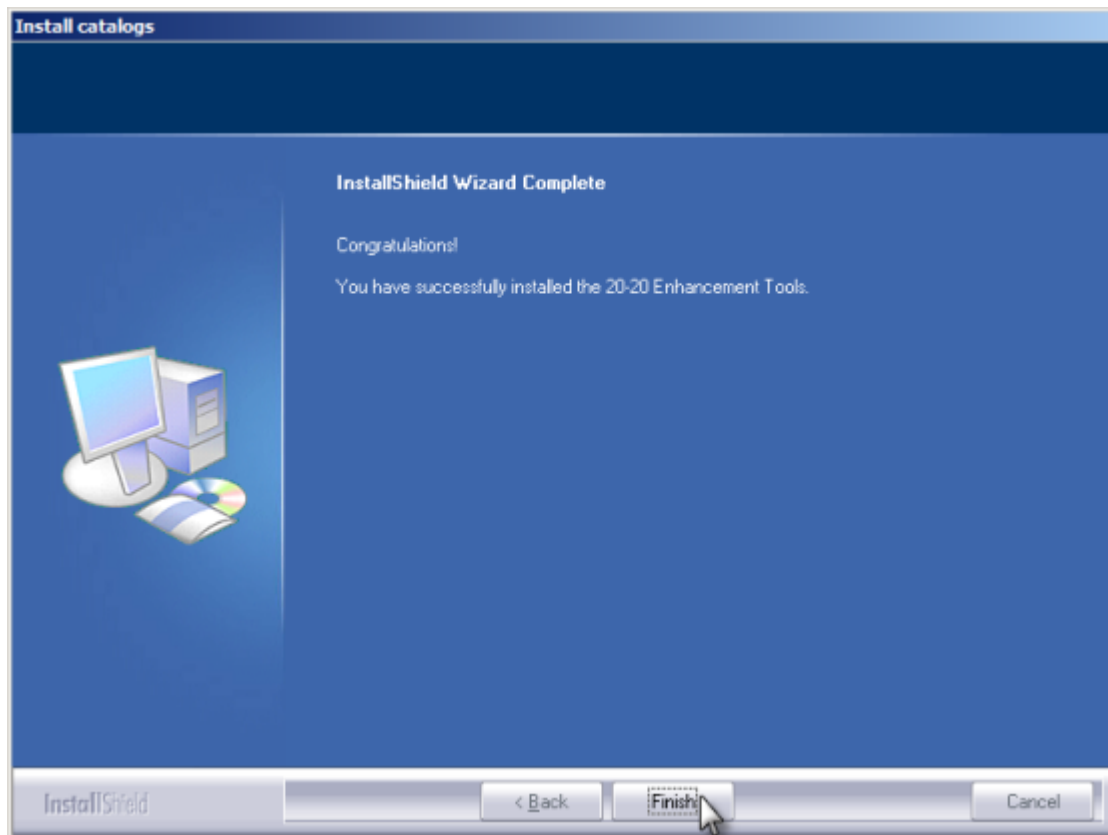


Allow time for **Loading external programs. Please wait...**




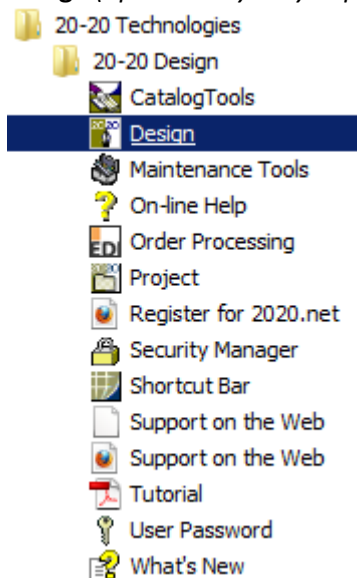
Congratulations! You have successfully installed 20-20 Design Version 9.1 CD2 (NZ 20-20 Enhancement Tools).

4. Left-click **Finish**

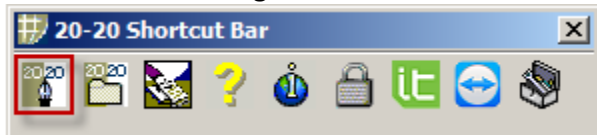


Launch 20-20 Design Version 9.1 by one of the following methods:

- a. Left-click the  button from your taskbar, left-click **All Programs, 20-20 Technologies, 20-20 Design, Design** (options may vary depending on Windows operating system)



- b. Left-click on the **Design** Button from the Shortcut Bar



Please allow time for 20-20 Design Version 9.1 to load



Select a default catalog: ITBUREAU (Or your default if available)

Add Your Name and Company Name in the appropriate fields

Left-click **OK** (this will launch 20-20 Design)

