

Adding a custom logo to 20-20 Design

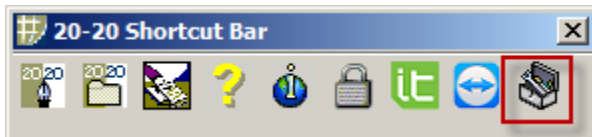
Please make sure you have your logo and it matches the specifications shown below:

- To prevent stretching and distortion set the dimensions to **200x200 pixels** (*ideally we want the logo in a square shaped format*)
- The logo should be in either a **BMP (Bitmap) or JPG (Jpeg)** format
- The name of the file should contain no spaces (*i.e. MyLogo*)
- Save it somewhere you can easily locate (*pref. desktop*)

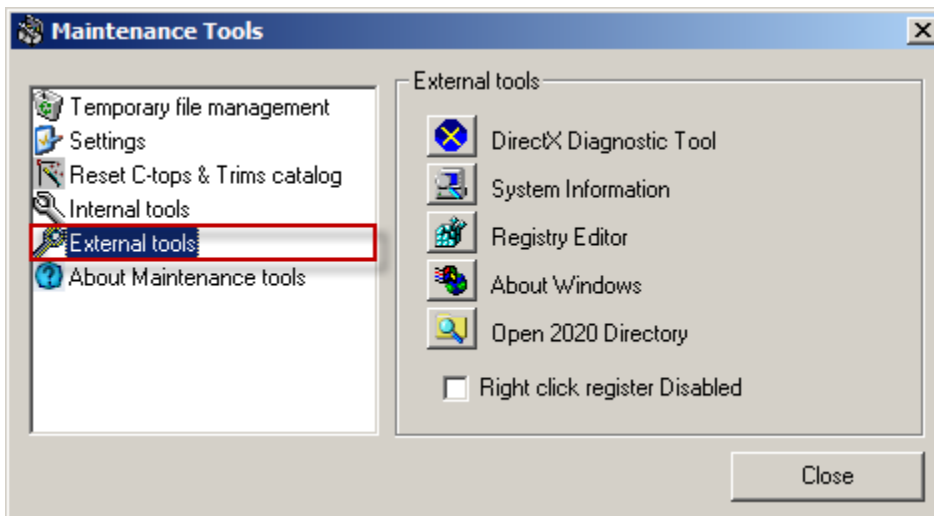
All of this can be achieved in most graphic software packages (*i.e. Photoshop, Corel or even Microsoft paint*)

1. **Close** the 20-20 Design program
2. Navigate to the following location **C:\program files\20-20 technologies\2020design\Config\60** on your computer through either “**My Computer**” on Windows XP or “**Computer**” on a Windows 7 machine

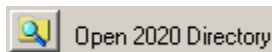
Alternatively you can left-click on the **Maintenance Tools** icon from your **20-20 Shortcut Bar**



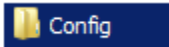
Left-click **External tools** (*located on the left-hand side*)



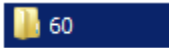
Left-click **Open 2020 Directory** (*located on the right-hand side*)



Double left-click the folder **Config**

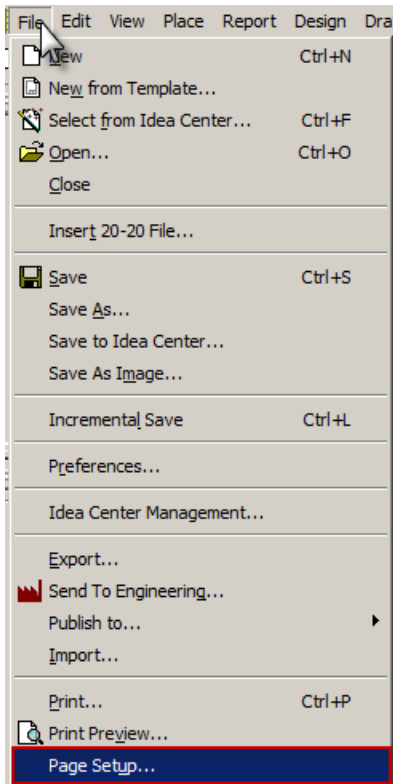


Double left-click the folder **60**

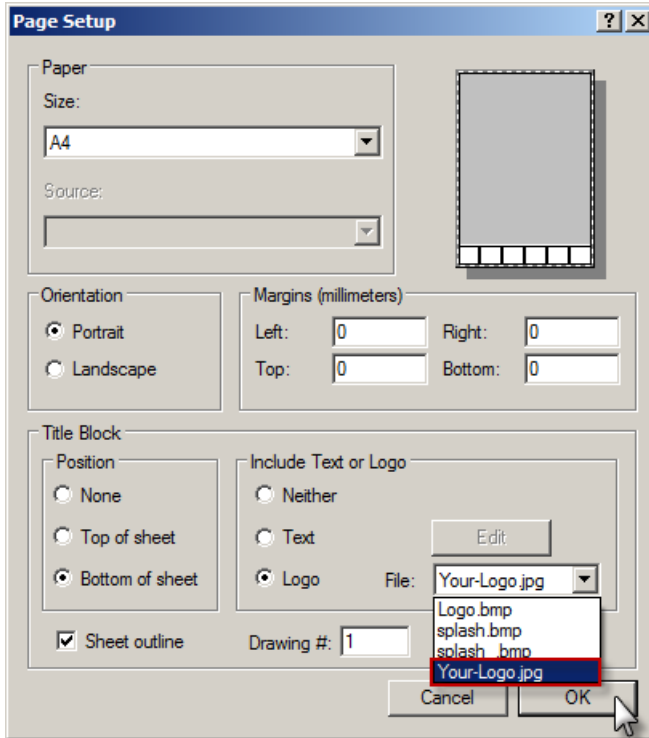


You should now be in the folder `C:\program files\20-20 technologies\2020Design\Config\60`

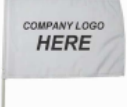
3. Copy your logo into this folder by either, dragging the image into the folder, or by using the standard **Copy** and **Paste** function
4. Once your logo image is in the **60** folder you can **Close** all the open windows and **Start** 20-20 Design as normal.
5. Left-click **File, Page Setup...**



- Left-click the down arrow on the the drop down menu labeled **File**. You should now see your logo file. **Left-click** your file to select it, left-click **OK** to complete change of logo



- You should now see your logo on the printouts

<p>All dimensions ,size designations given are subject to verification on job site and adjustment to fit job conditions.</p>		<p>This is an original design and must not be released or copied unless applicable fee has been paid or job order placed.</p>	<p>Designed: 18/10/2011 Printed: 08/02/2012</p>	
<p>Ryan Kitchen</p>		<p>All</p>	<p>Drawing #: 1</p>	<p>Scale : 1 : 15.0</p>